

User manual

omegon



Omegon® Thermalfox

Thermographic Scope

English Version 06.2021 Rev B 70604

Table of Contents

<i>Overview</i>	3
<i>Considerations and Safety Precautions</i>	3
<i>Product Specifications</i>	4
<i>Product Overview</i>	5
<i>Operation overview</i>	5
<i>Battery Charging Instructions</i>	6
<i>Indicator Light</i>	6
<i>Zoom mode</i>	6
<i>Colour Modes</i>	7
<i>After-sales Service</i>	7

Overview

This handheld Thermal camera uses an advanced non-cooled focal plane infrared detector and quality optical lenses as core components. It is sturdy and durable and suitable for all types of environments and applications.

The product may be used for external animal observing, search and rescue operations, law enforcement detection for policemen, night patrol, outdoor activities and personal security etc. The product is has a photography function. The photos may be viewed by connecting the device with a computer through USB.

Considerations and Safety Precautions

Please read the user manual carefully in order to use the product correctly

- Do not use this product in explosive, flammable, damp or corrosive environments.
- This product contains precision electronics and sensitive optical devices. Do not drop it, to avoid damage.
- Dismantling the product will void warranty. Please use damp cloth or weak soap to clean the enclosure of the device.
- Do not use abrasives, isopropanol or solvent to clean. The lens and screen should be cleaned with the use of professional optical glass cleaners.
- When the product is in operation, a slight click will be given out every few seconds. This is a normal phenomenon showing that the lens has captured the image.

Product Specifications:

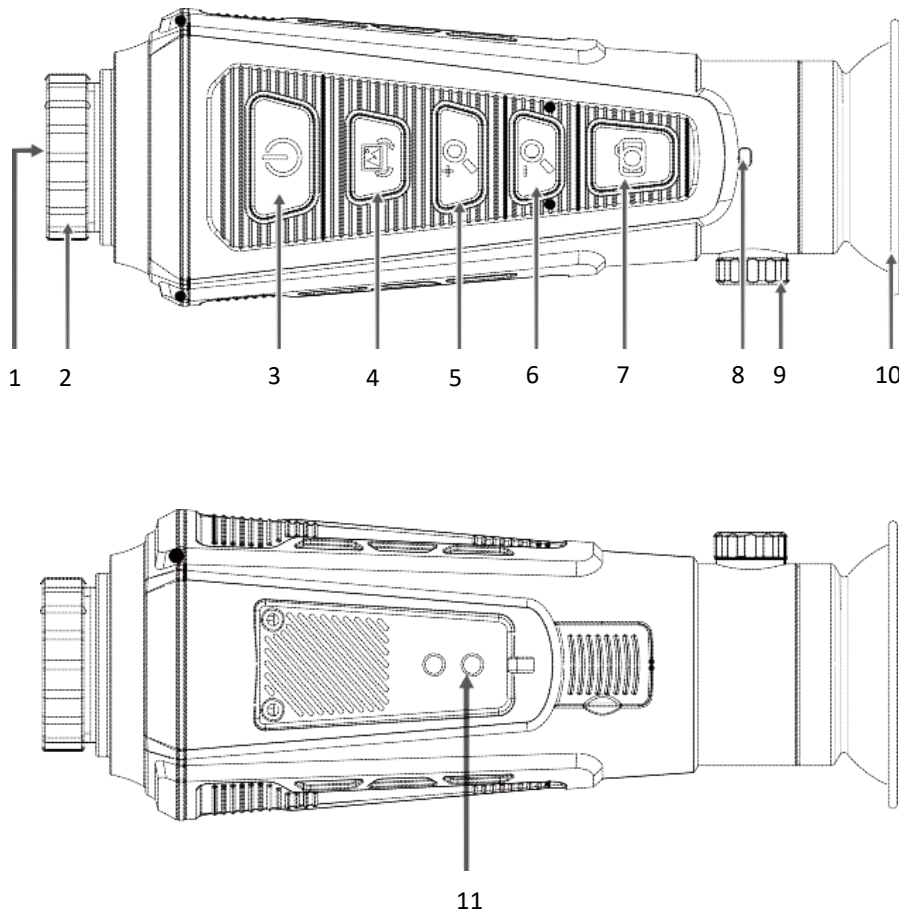
Model	HT-A4, HT-A4
Product weight	541.2g
Product size	187.3 x 68 x 68.2mm
Probe type	Uncooled focal plane
Chip Resolution	384x288 infrared focal plane
LCD resolution	720x540
Lens Diameter	35mm
Eyepiece	Single eyepiece display (the dioptic compensation is adjustable)
Field of view	10.7° x 8°
Digital zoom	2X; 4X
Wavelength coverage	8µm-14µm
Frame rate of thermal images	50Hz
Colour palette	Rainbow/Hot metal/white heat/black heat
Focusing mode	Adjustable
Image storage	Internal
Battery	Built-in rechargeable batteries
USB	Micro USB
Working time	≥6 hours
Work temperature	0°C - 45°C
Storage temperature	-20°C - 60°C

Identification range 160m

Recognition range 330m

Detection range 1200m

Product Overview



- 1- Infrared thermal image sensor
- 2- Adjustable focus lens
- 3- Switch
- 4- Mode switch
- 5- Zoom in
- 6- Zoom out
- 7- Capture
- 8- Indicator light
- 9- Dioptic adjustment knob
- 10- Eyepiece patch
- 11- (Open the safety cover before use)
CVBS video output interface,
USB interface

Operation overview:

- Charging: the product is provided with a built-in battery. Please charge it through the micro USB port.
- Power on/off: hold down "⏻" key to power on off.
- Image capture: Press "📷" key to capture the image. The screen will show a ✓ prompt, indicating that image capture was successful.
- (HT-A4) Image review: 🖼️
After powering on, short press the "⏻" key to view images stored on the device, press the "⏪" key to view the previous image, press the "⏩" key to view the next image, and press the "⏻" key to exit Image viewing mode.
- Delete image: After entering the image viewing mode, press and hold the "🗑️" key to delete the currently viewed image.
- Image Export: Captured and saved images can be viewed and exported to a computer via a micro USB connection.
- Mode switching: Press the "🌈" button to switch between the four imaging modes rainbow, hot metal, black heat, and white heat.

- CVBS video output: Press and hold the "⏏" key to switch to CVBS video output. Press and hold again to return to the built in display.
- (HT-A4) Zoom in/out: In the power-on state, press the "🔍" image viewing mode (the image displays the magnification "2X, 4X" when pressed). When the target is maximised, press "🔍" to zoom out 2X, 1X (the zoom out function can only be used after the image is enlarged).
- (HT-A4) Brightness adjustment of the display screen: In the power-on state, long press the "☀️" key to increase the brightness, long press the "🌑" key to decrease the brightness, and adjust the brightness one step for each long press.
- Dioptre adjustment: Rotate the dioptre adjustment button left or right to adjust the dioptre.
- Focusable lens: Rotate the focus lens left or right to focus. Rotate clockwise for near focus and counter clockwise for far focus.

Battery Charging Instructions

Use a micro USB data cable to charge the built-in battery.

The battery charge is indicated on the screen and the indicator light.

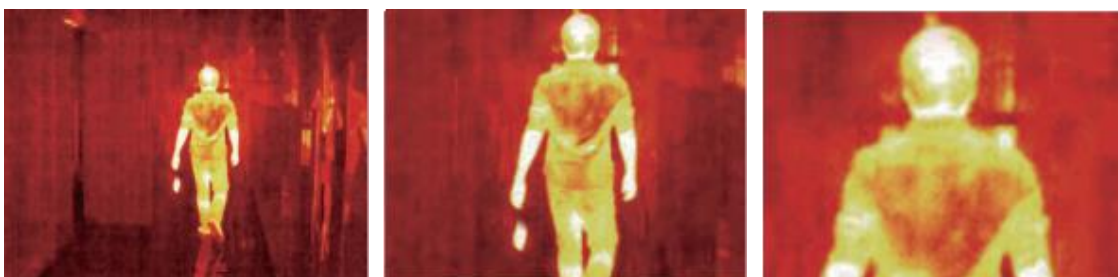
Indicator Light:

Status	Not being charged	In charging	Fully charged
Power on	Blue	Red blue (purple)	Blue
Power off	None	Red	None

Zoom mode

The magnification function lets you zoom in on objects.

The effect is pictured below:



Normal

2X

4X

Colour Modes

The colour mode menu changes the pseudo colour of infrared thermal image and provides four types of colour modes: rainbow, hot metal, white heat, black heat.

The selection of proper colour modes can show the details of the target object in a better manner. The colour modes rainbow and hot metal display colours and are very suitable to display high heat contrast and used to improve colour contrast between high temperature and low temperature. While the white heat and black heat colour modes provide a more linear colour contrast.

The effect is pictured below:



Rainbow

Hot metal

White heat

Black heat

EU Conformity Statement

This product and - if applicable - the supplied accessories too are marked with "CE" and comply therefore with the applicable harmonized European standards listed under the EMC Directive 2014/30/EU, RE Directive 2014/53/EU, the RoHS Directive 2011/65/EU

2012/19/EU (WEEE directive): Products marked with this symbol cannot be disposed of as unsorted municipal waste in the European Union. For proper recycling, return this product to your local supplier upon the purchase of equivalent new equipment, or dispose of it at designated collection points. For more information see: www.recyclethis.info

2006/66/EC (battery directive): This product contains a battery that cannot be disposed of as unsorted municipal waste in the European Union. See the product documentation for specific battery information. The battery is marked with this symbol, which may include lettering to indicate cadmium (Cd), lead (Pb), or mercury (Hg). For proper recycling, return the battery to your supplier or to a designated collection point. For more information see: www.recyclethis.info. Industry Canada ICES-003 Compliance.

This device meets the CAN ICES-3 (B)/NMB-3(B) standard.