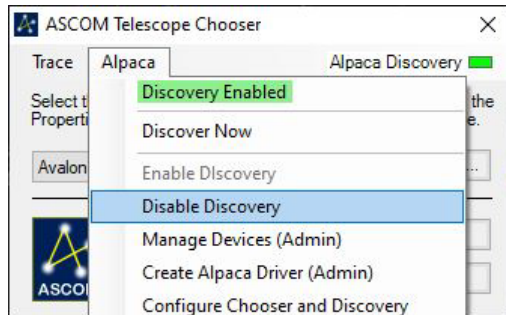


# First connection with the Nebula GoTo System driver with N.I.N.A



In order to connect the mount with Nebula GoTo System driver with N.I.N.A. it is required to choose the Avalon UD Telescope driver from the Telescope drop down menu list. This option will be available only after it will be selected with the ASCOM chooser.

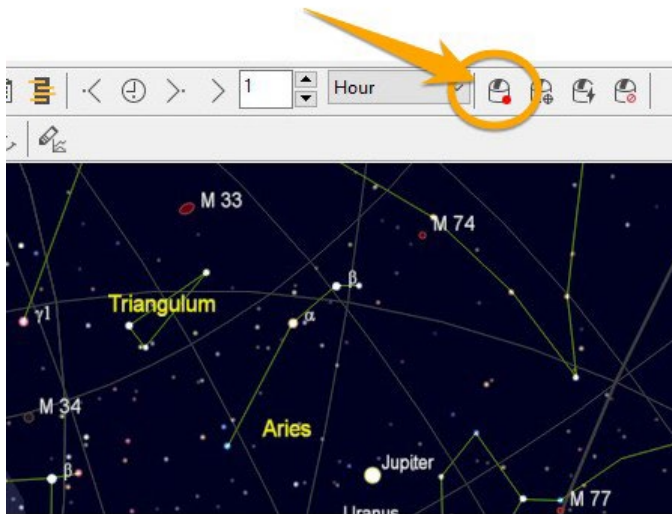
Inside N.I.N.A. it is not possible to launch the ASCOM chooser from the Telescope section menu so it is required to do this operation at least once by using an external software app, as for example Carte du Ciel, Stellarium etc...



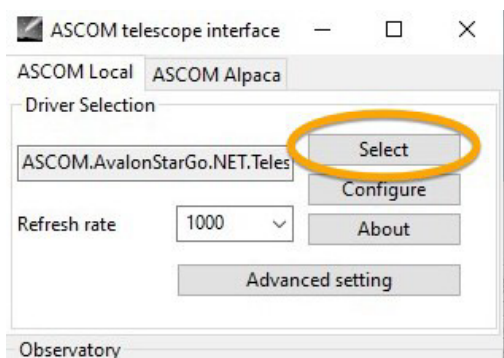
Choosing the Nebula GoTo System driver in the ASCOM chooser.

In the following example, the ASCOM selection is invoked from one of the most frequently used astrophotography app such as Carte du Ciel.

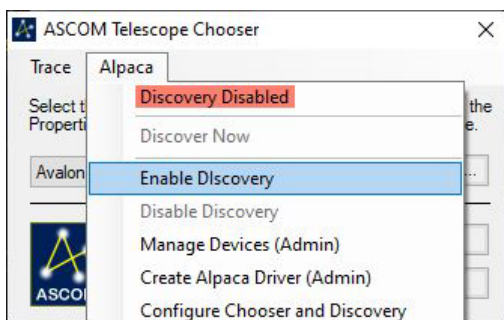
Run Carte du Ciel and click on the telescope button:



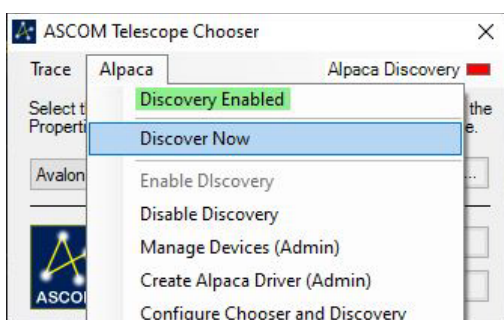
- In ASCOM local panel click on the Select button



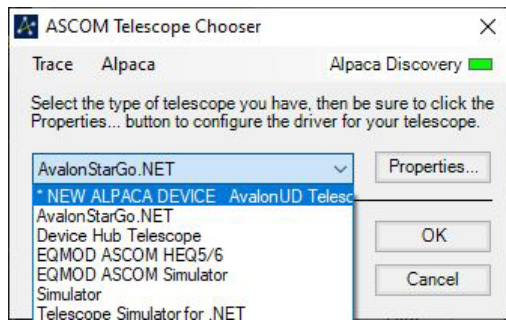
- Click on the Alpaca tab and click on the Enable Discovery option



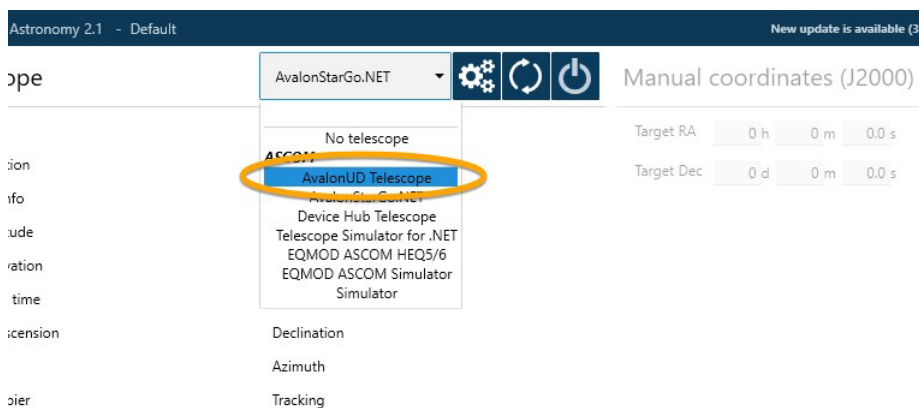
- When the option is enabled click on Discover Now



- After the Discovery option is enabled the Avalon UD Telescope driver will be available in the driver menu. Select it and click ok.



- Now the Avalon UD Telescope driver will be available in the N.I.N.A. telescope drop down menu list, allowing the connection with the mount.



NOTE: Once the driver has been correctly selected it is suggested to disable the Alpaca Discovery option in order to avoid more than one Avalon UD driver option in the telescope list.

